



NOETZIE CONSERVANCY OWNERS' ASSOCIATION

Newsletter

Spring 2011

Chairman's Chat November 2011 by Nick Taylor

Environmental Management Plan (EMP) for Noetzie

The first two objectives of the NCOA, as stated in our constitution, are to:

- promote Conservation as well as responsible and sustainable development in Noetzie and its adjoining areas
- promote the protection of indigenous plants and animals, undisturbed or important biological communities and landscapes of exceptional beauty within or adjacent to The Noetzie Conservancy.

In order to provide a framework for achieving these aims, which essentially articulate the *raison d'être* of the Conservancy, the Committee has set itself the task of formulating an EMP for Noetzie. Towards this end we commissioned CAPE EAPrac (Cape Environmental Assessment Practitioners), a company based in George, to prepare a draft for discussion by all members of the NCOA. This draft has been received, and the opening paragraph describes its aim as follows:

The purpose of this EMP is to ensure that the environmental impacts and management of the various phases of the township development on the receiving environment are managed, mitigated and kept to a minimum. These phases include existing dwellings, construction of new dwellings, management of open space areas and overall sustainability.

The draft has been discussed between committee members and comment has been made. Discussion of the draft will constitute the main item at the AGM in December.

Annual General Meeting

The AGM will be held as follows:

Time and date: 9h00 Thursday 29 December 2011

Venue: Gosling house on the hill

Agenda: Please send items to NCOA Secretary Cathy Shimmin at

cathy.shimmin@graviton.co.za



Development

Thompson/Robinson House (erf 80). After a long engagement with the NCOA over their plans, Richard Robinson and Eve Thompson got approval from the Knysna Municipality at the end of 2010. We look forward to commencement of building.

The Yellow Cottage (erf 33), formerly Knarr's Klause, now belongs to Derek and Kerri Cockcroft, who plan to do some alterations before the Christmas season. The Committee has approved the plans and building is now in progress.

The access road from the District Road 1771, opposite House Gosling, to Don Lindsay's castle on the beach was completed in June. The incline is very steep in parts. It has been reinforced with gabions, and quite a number of large drains running under the road at intervals cater for the runoff into dams. The committee is satisfied that good conservation practices were followed in the construction process.



Yellow Cottage.

Noetzie Car Park

In accordance with the Conditions of Approval (CoD) for the Pezula Private Estate, the Pezula developers approached the NCOA for comment regarding their obligations to upgrade the Noetzie car park and public access to the beach. Gerhardi Odendaal, PHO's Chairman, Albert McClean and Lizemarie from VPM Planning, met with Julie and Wendy in July to discuss the PHO plans.

VPM Planning supplied a draft document, compiled on behalf of the Knysna Municipality, which outlined the carrying capacity of Noetzie Beach with added reference to high season traffic. Initially the committee thought that the proposed 10 additional parking bays plus the existing 20 bays would suffice. However, taking into account the recent loss of vehicular access to the beach houses, the traffic congestion during sporting events at Pezula's Field of Dreams and the growth of the Noetzie township, it is clear that ten additional bays will not be sufficient in the future. The NCOA responded to VPM Planning stating that although 10 extra bays might be sufficient for the public's parking needs, it would not be sufficient for the

residents. To accommodate Noetzie residents' parking needs the suggestion was made that the developer re-open access to the parking area behind Old Pezula Castle, which was used by beach residents for decades, and that the area behind the river houses which has been cleared for parking, be formalised.

History of Noetzie

The History of Noetzie project is an ongoing project, headed by Chris Everett. Anyone who has a story to tell about Noetzie is invited to a recording session at 5 pm on Thursday 29 December. This has been done before at Montrose and proved to be an informative and fun evening, with tales of yesteryear delighting all. Details will be discussed at the AGM.

Alien clearing

A date for clearing alien plants up the river by Noetzie members will be made at the AGM.



A Life-changing Experience by Donald Fabian 17th October 2011

We have owned our house on the lagoon at Noetzie for about 35 years. For the first 25 years we had little trouble with monkeys or baboons. In fact, in all this time we have had a monkey in the house only once, when one walked up the steps into the house with our son Ivan and me, and Anita suddenly saw there were eight legs where there should be only four! We have always taken great care to close doors after we pass through them and to guard our food when sitting outside; when our children and grand-children were young we particularly made them take care. We also keep all fruit and bread covered and concealed from the windows. The wails from neighbouring houses 'Oh there goes the bread!', or 'Oh no! he's got the bananas', were enough to keep us on our toes.

But when we extended our house by adding another storey, life became much more difficult. Our top floor gets very hot, it gets sun all day every day of the year, and we found we could not have a window open even a crack, or the monkeys would get in. So we sweltered and got very cross.

Our solution to that was to put monkey guards in the windows. Hennie den Boestert at CX Steel made them for us and they fit comfortably within the window frame, which has a 20mm rebate, exactly the right size for a 20mm square frame, which is fitted with 50mm wire mesh. They are painted a soft green and are very unobtrusive. We secure them with a flat arm of mild steel on a screw, which rotates to fit behind a lug on the frame, easy to close and to open and to let us take the frame completely out for window-cleaning. The first design did not leave enough space at the sides for the arms that open the window to be used with the frame in place, but a small modification solved that and we have now, for the past three years, been happily secure in our house with the windows open for the breeze.

There were still problems. We saw monkeys swinging on the door handles trying very hard to get in, and it would not be long before they opened a door. Our door handles are levers and it was a simple matter to change the lever round so that it must be lifted up to open it, instead of pushed down. So far the monkeys have not learned that trick and I doubt if they will.

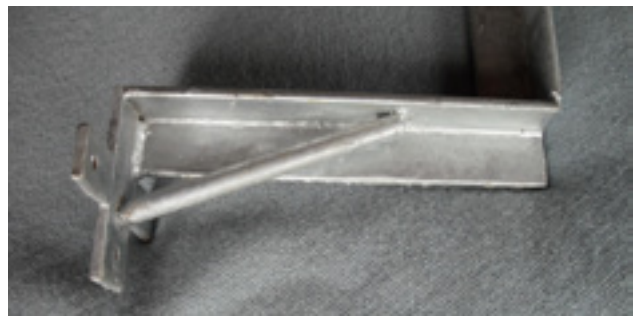
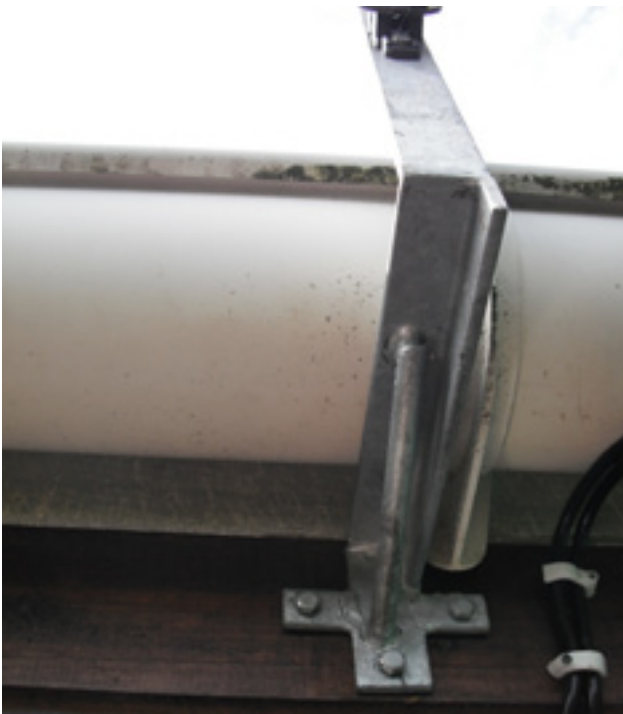


ABOVE: Modified door handles
LEFT: Window grid



The monkeys still gave us cause for annoyance and concern, however. Our new roof, high in the canopy, is an irresistible playing field and sun-bathing arena for them. Every morning, about 5 am in the summer, they came crashing down onto the roof from above the house and rudely woke us up. After a game of 'touch', some arm-wrestling, some grooming and a little warming up in the sun, they moved off, usually leaving a few calling-cards on the roof. As it provides part of our water supply, we decided we had to do something about it.

So last January I asked advice from the engineers among us and went to Hennie again and asked him to make two different sorts of bracket, one to accommodate the gutters on our north and south sides and one flat one to go on the fascia boards on the east and west sides. They are made of 5mm mild steel, are galvanised and are good and solid. At first I thought they were too heavy, but now I'm sure they are just right. From the Co-op I bought a Gallagher electric fence unit, a PortaFence B11, the simplest one they sell, and some wire and insulators. Eion Brown let me use the scaffolding he has here and many friends kindly helped me carry it all up to our house. The roof is about 10 metres above the ground and we erected the scaffolding up to eight metres four times, a lot of heavy work, for which I had Herbert, a labourer found by George Booyesen, to help me. Anita was also a help, picking up the tools when I dropped them, negotiating between ground level and various perches! We also had to use the long ladder, where we could not erect scaffolding. All the equipment cost me about R4000 and it was four days' work.



I switched on the morning we left Noetzie, so I could not see it in action. But the next time we came, George told me that about two days after we left, there was a terrible screaming from our house and the monkeys have never been on the roof since! They now come down the hill as before, but pass our house in the tree tops to the north. Now, in October, a large troop of baboons visited us, they were all over the roofs of the three houses around us, but left us well alone! I think they have learned a lesson too. Other people tell me that I can leave the fence switched off now the animals know it, but I leave it on as it draws a negligible current, I run it off our solar power direct from the 12V supply at the control box.

We and the monkeys have had a life-changing experience, they no longer bother us and we do not scream at them! We are now able to enjoy the monkeys as we used to do, they amuse us with their antics, but they soon move away as they know there is no food for them here and they cannot play on the roof any more.

The photographs show some of the details of the electric fence and the monkey screens. Anyone who would like to know more is very welcome to come and see when we are here.



Off-grid living

by Thys Fourie Omnisolar

OFF-GRID LIVING USING RENEWABLE AND ALTERNATIVE ENERGY SOURCES



OMNISOLAR

Living without grid supplied electricity does not mean you have to rough it. There are alternative energy sources that can make your living almost as comfortable with the added advantage that you will be using renewable and sustainable energy sources like electricity generated from the sun, wind or water energy.

The Home should be well insulated requiring less heating and cooling, and less energy is consumed to circulate conditioned air. Correctly placed windows can provide a large amount of heating and alternative lighting. Powering the conventional home with its conventional loads can be very costly, which prompts us first to look towards conservation to reduce the loads. Being energy-conscious by shutting off loads when not in use and shopping for energy-efficient appliances can alone reduce living costs but especially reduces the cost of alternative means of powering the home. Almost without exception this increased independence is cited by alternative energy home owners as a great source of satisfaction.

Energy efficiency plays an important role in keeping the cost of an alternative electricity system down. The general rule is that when electrical equipment or appliances, like geysers, stoves, heaters and tumble dryers, generate lots of heat they normally have high consumption figures. The use of energy-efficient appliances and lighting as well as non-electric alternatives wherever possible can make alternative electricity an environmentally friendly alternative to gasoline generators or utility power.

Lighting: Compact fluorescent energy-saving lamps use only 20% of the energy a normal incandescent bulb consumes. The latest technology, LED lights, uses even less electricity than compact fluorescent lamps. Please take note that low voltage halogen downlighters are low voltage but NOT low energy!

Cooking: Gas stove and cooker, wood, solar cooker. Microwave oven: Small microwave ovens can be used successfully from solar systems especially because their operation times are normally short.

Hot water: Solar water heating, LP gas geyser, boiler.

Small appliances: Many small appliances such as toasters and hair dryers consume a very large amount of power when they are used but by their nature require very short or infrequent use periods, so if the system inverter and batteries are large enough, they may be used on solar generated electricity.

Refrigeration: If an electric refrigerator is used, it should be a high-efficiency (super low consumption) type. An energy-efficient refrigerator/freezer uses approximately four times less electricity than conventional refrigerators.



The higher cost of good quality energy efficient-refrigerators and freezers is justified by savings in the number of solar modules and batteries required. Gas-powered absorption refrigerators are a good choice in applications where they are not used permanently, like in weekend or holiday cottages. In homes where these appliances are used permanently, the electric option will be cheaper and more convenient.

Washing: Most washing machines on a cold cycle have a fairly low consumption figure and can be run off an alternative electricity system.

Ironing: Electric irons consume about 1,500 to 1,800 watts/hour and it is expensive to operate them from solar electric systems. A silent type power generator is a good option.

Tumble drying: Tumble dryers are heavy consumers of electricity and again a silent type power generator will be a good option. LPG gas clothes dryers are also an option.

Heating: Gas and wood are better alternatives for space heating. Good passive solar design and proper insulation can reduce the need for heat.

Entertainment: TV, video, radio and hifi systems are low in consumption and can easily be run off an alternative electricity system. Although computers consume more power, they are relatively low in consumption. Notebook computers use much less power than table top models.

Water supply: Submersible and pressure pumping systems can now run off solar power and water can be pumped and pressurized to high heads.

A TYPICAL ALTERNATIVE ELECTRICITY SYSTEM WOULD CONSIST OF THE FOLLOWING COMPONENTS:

Solar Modules should always be rated on the quality and stability of the cells. These are expensive units but if purchased correctly can provide stable power output for well over 25 years. It does not pay in the long run to buy inexpensive options that offer inferior lifetimes and degrade at high rates.

Wind Generators are more costly than solar panels in the long term due to wear and consequently a shorter life. The most important decision when considering wind power is determining whether or not your chosen site has enough wind to provide the power you require and, more importantly, that it is available consistently.

Charge Controllers adjust the volt and ampere levels of the renewable sources to ensure the batteries are fully charged without permitting overcharge. This prolongs the life of the battery bank under normal conditions. Regulators can offer a host of extra benefits. They protect against reverse current leakage and over current, they offer low voltage disconnection options and temperature compensation. The newer range of maximum power point trackers also offer enhanced charging current and increased system efficiencies.

Inverters and chargers make the heart of the system. Many of today's inverters offer built-in charging capabilities. They can offer conversions from battery



Neil Metelerkamps wind generator



direct current (DC) to alternating current (AC) and vice versa efficiently. In recent years they also offer a host of extra features that have increased the efficiencies of power distribution throughout the home. The more reputable units can provide stable and extremely long lifetimes and can manage and synchronise the available power from the battery, renewable sources and generator together to give priority to different loads under different conditions and maximise the efficiencies of the system. Like regulators they offer multi-stage battery charging when alternative power sources are available which protect and prolong battery life.

Batteries come in a large range of types with different electrolyte and plate technologies with particular amenities built into them to offer specific characteristics. For the solar industry, where periodic deep cycling is required, each design has to be calculated correctly to provide the best cost versus lifetime. Factors like the amount of energy we need to store, the discharge and recharge rates, the depth of discharge characteristics of the battery, the voltage required and the projected life cycle or calendar life of the battery bank need to be weighed up carefully before a choice is made. Lead-antimony and lead-calcium batteries, wet or flooded open vented or valve regulated units vs. gel, AGM or carbon fibre batteries, flat plate automotive or semi-traction vs. traction deep cycle thick or tubular plates are a few examples.

Monitors should not be overlooked. Typically we need to know how much power is coming into the system from the charging sources and how much power is going out. The state of charge at any particular point and the expected lifetime at current rates of usage are important factors to keep track of in order not to over discharge the battery bank.

Generators are used as supplement to the solar power or as backup where seasonal variability of insolation (sun shine) is substantial as with cloudy climates or where occasional very large loads are powered. Engine-driven generators perform poorly when under-loaded, while solar systems often need to be doubled in costs to cater for 10-20% of the high energy users that only require short periods of use, for example, vacuum cleaners and washing machines. Generators can then be used economically to power several of the bigger loads during an acceptable scheduled time period while at the same time charging the batteries.

Cost implications can vary greatly depending on the quality and technology you implement, buying cheap components will usually cost more in the long term due to short lifetimes, incompatible technologies or features and insufficient growth possibilities. Small systems for cellphone charging and/or laptops can vary between R650 and R5000 depending on the usage required.

A small system that will power a few small electronic AC loads like TVs and laptops and a few lights with a 800W inverter charger that can manage 3.6kW of generator loads with a $\pm 320\text{Wp}$ solar array and $\pm 5.4\text{kWh}$ storage will range between R20 000 to R50 000 depending on which technologies are used.

A middle sized system would be able to power an energy-saving fridge/freezer combination and a few carefully chosen AC appliances, and would generally use a 2-3kW inverter charger that could manage around 7kW of generator loads with a solar array of 650Wp and storage of up to 18kWh and would price around R65 000 to R100 000.

A system with a 5kW inverter charger that can manage 11.5kW of generator loads with a $\pm 2\text{kW}$ solar array and $\pm 50\text{kWh}$ storage will range between R150 000 to R200 000.

For further information or quotations please contact OMNISOLAR at 044 884 1514. We can also be reached via fax or e-mail at 086 670 9999 or info@omnisolar.co.za

Please feel free to visit our website at www.omnisolar.co.za



Animal Sightings Update by Wendy Dewberry

Quite a few people have expressed interest in the stealth cameras we are using. At this point, we have eight at our disposal. There are three different types but all three types are completely digital, as opposed to expensive and outdated film cameras. All three types also use infra red beams instead of the outdated flash and this is a great improvement. From what I know, those two criteria are possibly the most important when choosing a camera for our purposes. The next point is that all three models are able to use rechargeable batteries which is a great money saver. Most modern appliances are able to use rechargeables, but do check before you buy.

Since the NCOA has all these cameras out in the field which all save data onto an SD card, it is easy to take the card out and replace it with a fresh one, leaving the camera up and ready on site. Then I rush home with an exciting bag of SD-card booty to download and see what we have “caught” .

The three types of cameras we own all have choices between video and stills, length of video, interval between shots, sensitivity levels, distance of focus, size of video and pixels of frames, time stamps and timer settings.

If you are looking for brand-names, Stealth cam is big and bulky and not easy to hide, but provides excellent quality shots and video. Also, its battery pack, bought separately, lasts for a long time.

The other type we use is the ScoutGuard. These are small and compact and use 8 rechargeable penlights and a 2 gig sd card and can really be camouflaged.

The third type is one which is able to use an SD card larger than 2 gigs and therefore can be left out in the field.

This year our most exciting catches have been two separate visits by the leopard and two sightings of an armadillo. Please watch the video uploads on our NOETZIE CONSERVANCY facebook page.



Scout Guard



Here is a frame grab from the videos of the leopard which visited Julie and Wendy’s house on 28 October 2011 at 8.45 pm.



Noetzie Conservancy's facebook page **by Marylou Newdigate**

Do you have a Facebook account? If you don't, now is the time to get one, as the NCOA has started our own Facebook group – a great platform for sharing the exciting results of the stealth camera photos and videos, as well as members' Nature sightings and experiences at Noetzie.

As this is a 'closed' group, only the Noetzie Conservancy members may join and view the posts. This is to keep our footage of leopards and other threatened species protected from possible unwanted attention. To join, search for Noetzie Conservancy after logging into Facebook and click 'Join'. A group administrator will add you to the group. It is that easy and simple. We hope as many members as possible will join the group and start sharing their wildlife and nature photographs. We already have some lovely videos of our leopard, aardvark and genet cats, as well as some beautiful bird photos for you to enjoy. Please stay in touch with Noetzie ALL year round and join our Facebook group today.

Outdoor classroom

The School site, now known as the Outdoor Classroom has been developed over the past 2 years. For more information about the development of the area, please go to the Facebook page. A short video presentation is available. Also, while you are at Noetzie, please take the time to walk the area's paths, taking note of birds, frogs, evidence of fauna and the breathtaking flora. Recently the NCOA was fortunate to get the attention of the Outramps CREW Group on the spot. This is their report.



Report on Erf 384 portion 1 **by Di Turner**

The Outramps CREW Group visited erf 394/1 at Noetzie on the 18th of August 2011. We did this at the invitation of Wendy Dewberry on behalf of the Noetzie Conservancy.

This is a very laudable project which aims to conserve some of the precious land that has been spared from development along our coastline. Wendy is doing an excellent job and we wish her lots of luck in her endeavours. We have compiled a species list for the property, which is enclosed. It is no way comprehensive, but will go some way to helping others identify the plants that grow on this property. We found some mistakes in the labelling, which will be corrected.

There are a number of Plants of Special Concern that could occur here in the future. Johan Baard of Sanparks has mentioned *Gladiolus vaginatus* (Vulnerable) and *Pterygodium newdigateae* (Vulnerable) in his report. *Satyrium princeps* (Vulnerable), *Disa hallackii* (Endangered), *Acrolophia lunata* (Endangered) and *Disa newdigateae* (Critically Rare – Presumed Extinct) are all possibilities. *Disa newdigateae* has not been seen for about 100 years, so would be a huge find.

We would be very interested to hear if any of these plants occur on the property in the future. To this end, I have included photographs except for *Disa newdigateae*. I am unable to access a photograph of this very rare plant.

We have also included the official site sheet for erf 394/1. This goes to the South African National Biodiversity Institute in Pretoria. The data is used to update the Red List of South African Plants. We are the first country to comprehensively assess our very diverse flora. A staggering 20456 taxa have been evaluated. The core function of CREW is to collect data so that the Red List is kept up to date.

Our very best wishes are extended to the Noetzie Conservancy and Wendy Dewberry. We wish you a green environmental future.

Many thanks

Di Turner, Outramps CREW Group, Southern Cape



Report on Erf 394/1 by J Baard, Scientific Services, SANParks, Knysna, 20110819

I visited Erf 394/1, part of the Noetzie Conservancy, with Outramps/CREW on 2011.08.18. The fynbos is in good condition and in a vigorous phase following a fire a few years back. The area is clear of invasive alien plants. *Dymondia cf margaretae* (extralimital) was planted and could spread into the fynbos eventually and should be taken out.

Property 394/1 falls outside the Ecological Support Area and a small part of the property is classified Critical Biodiversity Area.

The complete property does, however, fall into what SANParks consider Coastal Corridor (ie important to protect, to keep our Coastal Corridor's integrity).

On the visit to the relevant property the following plant **Species of Special Conservation Concern** (Raimondo 2009) were observed. These are:

<i>Oxalis pendulifolia</i>	Vulnerable
<i>Curtisia dentata</i>	Near Threatened
<i>Elaeodendron croceum</i>	Declining

Other Species of Special Conservation Concern may also occur. It is typical *Gladiolus vaginatus* habitat. *Pterygodium newdigateae* may also occur on this property as it occurs in this vegetation type (Vlok et al 2008).

Species occurring on Erf 394/1 that is **protected under the NATIONAL FORESTS ACT**, 1998 (Act 84 of 1998) include:

Podocarpus falcatus (synonym *Afrocarpus falcatus*)
Pittosporum viridiflorum
Sideroxylon inerme

The **vegetation type** is Noetzie Proteoid Fynbos (Vlok et al 2008). It constitutes only 0.28% of the total of all vegetation types in the Garden Route Initiative area and is in areas commonly under pressure of development with very little occurring inside the Garden Route National Park.

Erf 394/1 is well worth conserving in its natural state as this vegetation type is poorly represented in protected areas.





Conservancy meeting report **by Wendy Dewberry**

The 29th Garden Route Conservancy Forum Meeting was hosted by the Gouna Conservancy at their San Ambrosio Church in Gouna on Saturday, 8 October 2011 at 9 am.

Usually there are very interesting guest speakers, but for this meeting, the first for 2011, the agenda was focused on the report-back from all attending Conservancies.

Our report-back was well received by the audience. In the interest of brevity I chose to speak of three positive activities that the NCOA has engaged in for this year. The first was a brief overview of our Noetzie Environmental Management Plan, which is in the process of being constructed. The next was a short composite video of our animal sightings via the eight stealth cameras. This can be viewed on the Facebook page, or you can acquire a copy from Wendy at the AGM, by prior arrangement. The third was a video presentation on the status of the Outdoor Classroom Project, also referred to in this newsletter. When you come to Noetzie, please do take a moment to walk this garden. We are very proud of the progress and welcome comments and suggestions.



Teatime at Gouna



Weeds Forum report back by Wendy Dewberry

Representing the Noetzie Conservancy, I attended the Weeds Forum meeting held on 14 October at the Garden Route Botanical Gardens, Caledon Street, George. <http://www.bgci.org/garden.php?id=2359>.

According to Melissa Mackay, the convenor of Weeds Forum (and incidentally the director of Cape EAPrac who is dealing with our developing EMPr for Noetzie), the Weeds Forum has been going for around ten years and deals with networking and support for the very real and mammoth task of alien clearing. I was amazed at the representation at the meeting – members of the following institutions: a Compost initiative, members of a waste-management group, conservancy members, representatives from WESSA (Wildlife and Environment Society of South Africa), LUPO (Land Use), Trustees of the George Botanical Garden, Botanical Society, Fancourt gardens and alien control section, George Municipality, Department of Transport, geologists, SANParks, Dendrological Society, Bitou Municipality, PhD Ecology Students, Natural Resource Management lecturer from Saasveld, Hilland Associates Environmental Management Consultants, Pledge Nature Reserve, Herold Wines, and the FPA (Fire Protection).

From a Noetzie perspective, I am particularly concerned about the wattle infestation up the Noetzie River. In 2009 we embarked on an alien clear with SANParks, Pezula and some NCOA members, namely Santi den Boestert and me. I had never been up that far, but what I saw horrified me – thick forests of Black Wattle (*Acacia mearnsii*) with trunks broader than one could get ones arms around. In the end, it transpired that SANParks and Pezula frilled some large trees in areas, pulled the cuttable trees up out of the rivers edge and hand-pulled saplings. The following year there was a half-hearted effort for a day, and Noetzie was promised that the project would be put on the budget for 2011. Not!

After traversing the Prince Alfreds pass and seeing the complete infestation of wattle there, it dawned on me that unless we institute a complete attack and ongoing programme to deal with the wattle up the Noetzie River starting from Brackenhill, we will end up with a situation that is out of our hands.

At the meeting I spoke to Maretha Alant of SANParks who said that she would approach the Forester Waldo Erffman and make it a priority to budget for ongoing removal of aliens in the Noetzie River.

The other person I approached was Chris Gow, a retired geologist and zoologist and a longtime amateur herpetologist and botanist who is currently very involved with the Western Heads/Goukamma Conservancy. He offered to come upriver to identify what I thought was Lantana growing along the banks of the river. I was going to ask him to identify it and write an article for the newsletter on the way forward to remove it, but since it has turned out to be an indigenous herb, he had to think of something else to write!



There were two speakers at the Weeds Forum – the first a representative from the host venue, Garden Route Botanical Gardens.

The Garden is situated against the mountain, northwest of George. They have recently acquired a lease on 6.8 ha which they require funds to manage. The Garden is situated in the area where, in 1811, the dam was created for the first water source for the town of George. They now use the 200 year old eco system for the garden. They have recently retraced and dug the original furrow – an historical entity they plan to use. Other historic facts include the following:

- 1986 – the van Kerwel Garden became a Nature Reserve
- 1996 – the Botanical Garden was planned
- 1988 – the garden became an institution.

Today, they raise funds and provide services in the social, environmental and scientific fields with research, an indigenous garden and nursery and a plant identification service. They also record insects, birds and reptiles. To date, R8 mil has been raised privately.

The second presentation was given by members of the Fancourt Environment managers. They were happy to report that they had received the Audubon International Certification which is an American instrument used to credit golf courses all over the world for best Environment practice. Fancourt is one of only two golf courses in Africa to receive this award. The speakers came across as very committed to mitigating the effect of their golf course. Included is the creation of sanctuaries for reptiles; moving away from chemical control of rodents by creating interactive habitats for raptors and snakes; education of staff; outreach programs and active care of wetlands.



A Visit to Noetzie by Chris Gow

I was fortunate to have been in the Goslings' office shortly after Wendy had sent through the video footage of the now-famous aardvark, so I got an early preview. As I bump into Wendy quite often – Knysna Environmental forum, Cape Nature Conservancies Forum, and some rather exclusive musical evenings – I felt I could badger her into showing me the Noetzie camera setup, and, in fact it didn't take much to extract a promise. [How's that for a sentence!] I tend to be rather naïve, so would never have suspected such a sweet soul of duplicity. Feminine wiles! Read on.

Fairly recently I suggested Wendy attend a meeting of the South Cape Weeds Forum, where the war on alien plant invaders is discussed. 'Ah' thought Wendy, unbeknownst to me, 'I will get Chris to write me an article about invader plants for my Newsletter.' That perhaps hastened the day and off we went boating up river on a magical excursion. Birds were scarce that day, but like birds, frogs can be identified by their calls and I heard the plain rain frog, bronze cacos, and clicking stream frogs (common names from Vincent Carruthers) which might have been drowned out by birdsong.

What Wendy thought might be invasive lantana turned out to be an indigenous herb, (we saw some wattle and blackwood that should come out soonest). Nothing daunted I was instructed to write about something else. (Someone who is easily daunted will never be a good editor.)

The other day I told a student I correspond with occasionally that there are two guiding principles or rules in conservation:

- 1.) Nature knows best, and
- 2.) People don't understand rule one.

It starts with habitat conservation and the rest follows. At Noetzie you are so fortunate to have a self-contained piece of paradise – beach, river, cliffs and slopes, forest, fynbos – you have the lot, AND perhaps best of all, low human impact. But ever since Eve (ie since human-kind got clever) there has always been the potential for trouble in paradise.

Wendy's footage includes some of feral dogs (well maybe they nominally live at Nekkies, but what's the difference?) They need to be ruthlessly eliminated: the how is the tricky part. You have typical South Cape bushpigs, but be aware that domestic pigs go feral very easily and there are persistent rumours that domestic and bush pigs can mix and produce viable young – I have a friend who is a pig expert and she has a student collecting data on this problem as I write. I'm sure I saw a crossbreed on the Springbok Flats a few years ago. Warthog don't have this problem. Our varkpespolisie are a joke – as someone said to me pigs travel on back roads by bicycle at night and you can't stop it.

If there is one thing that stands out from the above it is Love Your Leopards. It is debatable whether a leopard would attack one of a pack of dogs (but they will put the wind up them!), and they sure love little pigs.

You lucky people are ideally situated to make photographic recordings of your wild animal life. These studies are in their infancy, for example I'm sure one could indentify by their markings and count individual bushbuck. Why don't the elephant people use stealth cameras? Perhaps they do?



Plain Rain Frog



Submit your bird photographs

You are hereby invited to submit your photographs of birds taken at Noetzie for inclusion in a Noetzie Bird guide. The aim is to create our own specific handy bird booklet, rather than just a list, with photographs taken by us at Noetzie. Obviously all submissions will include the assumption of right to use them in this booklet. All published snaps will be credited with submitted information, including the following:

Name of Photographer

Bird

Time and place

if possible, **camera and settings** and any other **apparatus** used.

Please submit **one photo per email** with the Subject line

Noetzie Bird + (Bird name)

Email photos as JPG preferably 300 dpi. If the files are too big to email, please copy them onto a disc.



**Black Headed Heron by Wendy Dewberry
22 Oct 2011 Noetzie Headland Canon
EOS 7D F6.3, 1250 sec, ISO 400**

Check List for Birds of Noetzie Grid reference 3423AA October 2011 by Donald Fabian

Old names are shown in brackets. Not all birds seen at Noetzie are listed, please add any additional ones.

Red-necked Spurfowl (Francolin) Black-headed Heron
 Egyptian Goose Purple Heron
 African Black Duck Black-crowned Night Heron
 Yellow-billed Duck White-backed Night Heron
 Red-billed Teal Little Bittern
 Scaly-throated Honeyguide Hadedda Ibis
 Lesser Honeyguide Black-headed Oriole
 Knysna Woodpecker Fork-tailed Drongo
 Olive Woodpecker Blue-mantled Crested-Flycatcher
 African Hoopoe African Paradise Flycatcher
 Green (Redbilled) Wood-Hoopoe Black-backed Puffback
 Narina Trogon Southern Tchagra
 Half-collared Kingfisher Southern Boubou
 Malachite Kingfisher Bokmakierie
 Giant Kingfisher Olive Bush-Shrike
 Pied Kingfisher Cape Batis
 Speckled Mousebird Pied Crow
 Red-chested Cuckoo White-necked Raven
 Klaas's Cuckoo Common Fiscal (Shrike)
 African Emerald Cuckoo Grey Cuckooshrike
 Burchell's Coucal Barn (European) Swallow
 Black Swift White-throated Swallow
 White-rumped Swift Pearl-breasted Swallow
 Knysna Turaco (Loerie) Greater Striped Swallow
 Barn Owl Rock Martin
 Cape Eagle-Owl Common House Martin
 Spotted Eagle-Owl Black Saw-wing (Swallow)
 African Wood-Owl Cape Bulbul
 Fiery-necked Nightjar Sombre Greenbul (Bulbul)
 Speckled (Rock) Pigeon Terrestrial Bulbul
 African Olive-Pigeon (Rameron Pigeon) Cape Grassbird
 Lemon (Cinnamon) Dove Little Rush- (African Sedge) Warbler
 Laughing Dove Knysna Warbler
 Cape Turtle-Dove African Reed- (Marsh) Warbler
 Red-eyed Dove Lesser Swamp- (Cape Reed) Warbler

Black Crake Yellow-throated Woodland-Warbler
 Common Moorhen Cape White-eye
 Red-knobbed Coot Grey-backed Cisticola
 Wood Sandpiper Levallant's Cisticola
 Common Sandpiper Neddicky
 Water Thick-knee (Dikkop) Karoo (Spotted) Prinia
 Spotted Thick-knee (Dikkop) Bar-throated Apalis
 African Black Oystercatcher Green-backed Camaroptera (Bleating Warbler)
 White-fronted Plover Olive Thrush
 Kelp Gull African Dusky Flycatcher
 Caspian Tern Cape Robin -Chat
 Swift Tern Chorister Robin-Chat
 Sandwich Tern Karoo Scrub-Robin
 Common Tern African Stonechat
 Arctic Tern Red-winged Starling
 Osprey Black-bellied Starling
 African Fish Eagle Orange-breasted Sunbird
 African Harrier-Hawk Amethyst (Black) Sunbird
 African Goshawk Southern (Lesser) Double-collared Sunbird
 Steppe Buzzard Greater Double-collared Sunbird
 Forest Buzzard Cape Sugarbird
 Jackal Buzzard Cape Weaver
 African Crowned Eagle Yellow Bishop (Yellow-rumped Widow)
 Rock Kestrel Swee Waxbill
 Little Grebe (Dabchick) Common Waxbill
 Cape Gannet Southern Grey-headed Sparrow
 African Darter Cape Wagtail
 Reed Cormorant Plain-backed Pipit
 White-breasted Cormorant Cape Canary
 Cape Cormorant Forest Canary
 Little Egret Yellow Canary
 Yellow-billed Egret Brimstone (Bully) Canary
 Great Egret (White Heron) Streaky-headed Seed eater
 Grey Heron Cape Siskin



rainfall at Noetzie

Rainwater tanks must be full.

January 2011 – 30.5 mm

February 2011 – 52 mm

March 2011 – 41 mm

April 2011 – 18 mm

May 2011 - 207 mm

June 2011 – 129mm

July 2011 – 190,5mm

August 2011 - 99mm

September – 56mm

October – 27,5 mm.

Garden Route Initiative Report by Wendy Dewberry

Attending the Garden Route Initiative (GRI) meetings are beneficial and educational, with agendas of diverse, specialist and relative interest to Conservancy matters. On 28 October I attended the fourth and final GRI meeting for 2011.

The salient message from this meeting was the report that the GRI is in the process of compiling the necessary documentation for submission to UNESCO for biosphere reserve status for the Garden Route Area. The map below denotes the boundaries which are still to be finalised.

This status would effect a GRI partnership through the CAPE (Cape Action for People and the Environment) programme to include systematic fine-scale biodiversity planning, consolidating protected areas in the critical lowlands and marine areas, promoting conservation stewardship among private landowners, and working towards promoting growth in the number of jobs, training and entrepreneurial opportunities through biodiversity management, sustainable natural resource use and responsible tourism. Being an internationally recognised national-level instrument, Biosphere Reserve Status will potentially be a great leap towards Environmental Stewardship for our area.





Mosquito Trap - A Cheap Way

It's just a mix of water, brown sugar and yeast.

1. Cut a plastic bottle in half, keep both parts. Can be soft drink bottle.
2. Take the lower portion of the bottle. Dissolve the brown sugar in hot water. Let it cool down to ~70 deg F (room temperature).
3. Add the yeast. Carbon dioxide will form. (This will attract the mosquitoes.)
4. Cover the bottle with a dark wrap and insert in the top portion upside down like a funnel. Place it in a corner in your house.
5. In 2 weeks you will be surprised by the number of mosquitoes that get caught in the trap.





We welcome little Emily Rose Suckling to Noetzie, sister to Abigail Grace and daughter to Peter and Mirielle, born on the ninth of June 2011, weighing 4.2kgs and measuring 54cms. We look forward to watching her play in the sand at Noetzie.



We welcome baby Everett Hsu to granny Trish Nicolson on the first of November 2011. He looks just like dad Jaxon and has a big dimple on his chin just like mom Ambre. Congratulations.

Congratulations to Alan Blem and family who purchased erf 55 on the river in March this year. They are shareholders in the van Gend house and have been bringing their children, Justin aged 12 and Jessica aged 7, to Noetzie since birth.

Congratulations to Richard Moultrie and Joanna Taylor who have recently purchased erf 59 on the river – Candlewood Cottage (formerly Barnes/Roelofse). Joanna is also part of the van Gend house, being Nick Taylor's daughter.

Congratulations to Derek and Kerri Cockcroft and family on the purchase of erf 33, the Yellow Cottage on the beach (formerly Knarr). They are doing minor upgrades to be ready for a holiday in December. Welcome to Noetzie Conservancy.

Thank you to Cecily van Gend for editing and to Cali Dewberry for her wonderful layout.